

SHENZHEN BOND OPTOELECTRONICS COMPANY LIMITED

SPECIFICATION FOR APPROVAL

Customer: _____

Description: 1W POWER LED

Model: BDL-P01W

No. : L0009

Date: 2006-03-29

Enclosure is the specification

BOND OPTOELECTRONICS COMPANY LIMITD			
Production Dept.	Quality Dept.	Engineering Dept.	Marketing Dept.

APPROVED SIGNATURES			

Add: B501, Seat 5, YongLeXinCun, Nanshan District, Shenzhen, China

Tel: 0086-755-26685446

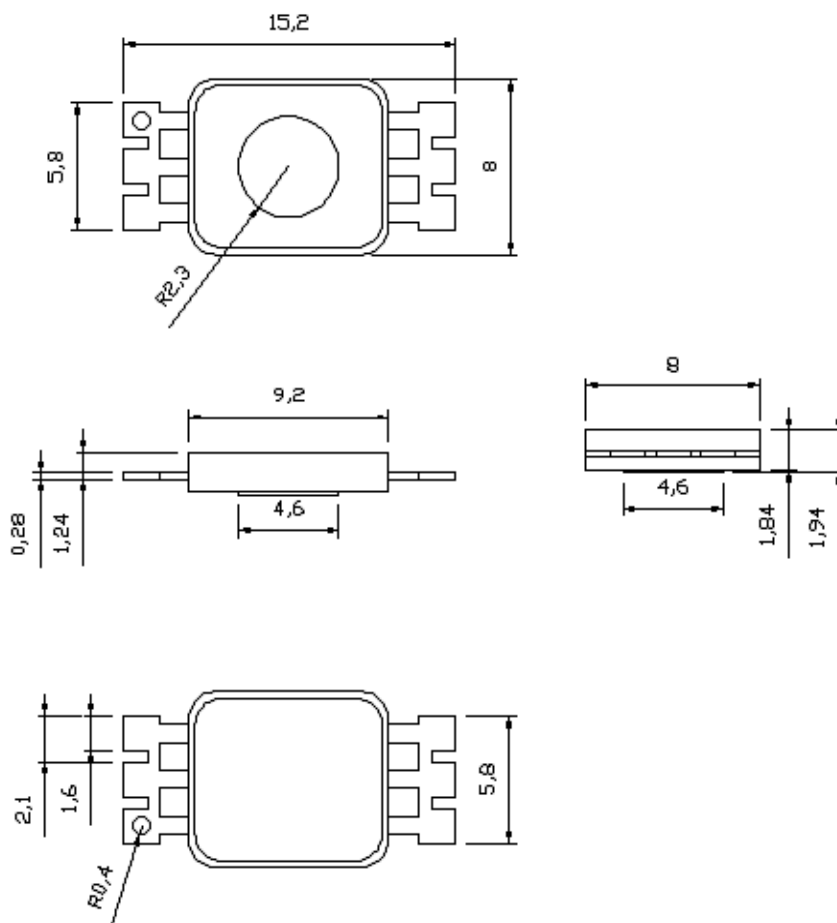
Fax: 0086-755-26822679

Email: Kevin@bond-led.com

Website: <http://www.bond-led.com>

BDL-P01W**Features**

- 1)HIGH SUPER FLUX OUTPUT.
- 2)LOW CURRENT REPUIREMENT
- 3)LOW POWER CONSUMPTION
- 4)LOW RESISTANCE
- 5)LONG LIFE-SOLID STATE RELIABILITY

Package Dimensions**Notes:**

1. All dimension units are millimeters.
2. All dimension tolerance is $\pm 0.05\text{mm}$ unless otherwise noted.

Electrical / Optical Characteristics at T_A=25° C

ITEM	Symbol	Min	TYP	Max	Unit	Test Condition
Forward Voltage	V _F	3.0		3.8	v	I _F =350mA
Reverse current	I _R			10	uA	V _R = 5v
Color temperature	T _c	3000		9000	K	I _F =350mA
LuminousFlux	Φ _v	20.		52	lm	I _F =350mA
Viewing Angle	θ 1/2		140		DEG	I _F =350mA
Chromaticity Coordinates	X		0.32			I _F =350mA
	Y		0.32			I _F =350mA

Absolute Maximum Ratings at T_A=25° C

ITEM	Symbol	MAX	Unit
Power dissipation	P _D	1.5	W
Forward Current*	I _{FP}	800	mA
Continuous forward Current	I _F	500	mA
Reverse Voltage	V _R	5	v
Operating Temperature	T _{opr}	-30° ~+60°	
Storage Temperature	T _{stg}	-40° ~+80°	
Lead Solder temperature	T _{sod}	+260° 5Sec	

Note:

1/10 Duty Cycle, 0.1ms Pulse Width.

2mm below package base

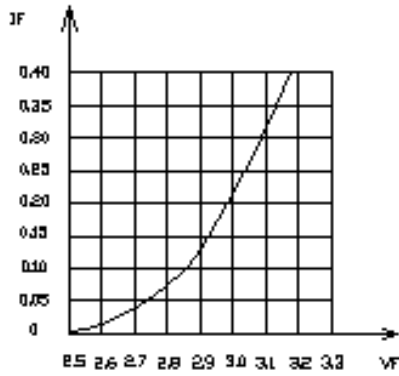
■ Reliability Performance

■ 1. Test Items And Result

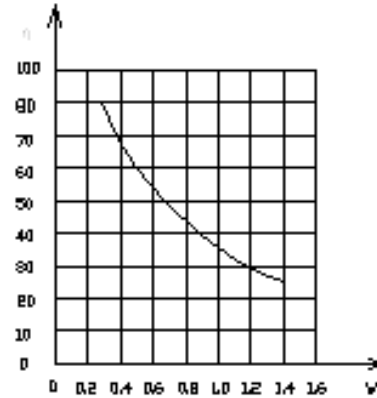
Test Classification	Test Item	Test Conditions	Test Duration	Sample Size	AC/RE
Life Test	Room Temperature DC Operating Life Test	Ta=25 °C ± 5 °C , IF=20mA	1000 hrs	30pcs	0/1
Environment Test	Thermal Shock Test	-10°C ± 5°C ↔ +100°C ±5°C 5min. 10sec. 5min.	50 cycles	30 pcs	0/1
	Temperature Cycle Test	-40°C ± 5°C ↔ +85°C ±5°C 30min. 5min. 30min.	50 cycles	30 pcs	0/1
	High Temperature & High Humidity Test	Ta=85°C ± 5°C RH =85% ± 0.5 %RH	1000 hrs	30 pcs	0/1
	High Temperature Storage	Ta=100°C ± 5°C	1000 hrs	30 pcs	0/1
	Low Temperature Storage	Ta=-55°C ± 5°C	1000 hrs	30 pcs	0/1
Mechanical Test	Resistance to Soldering Heat	Ta=230°C ± 5°C	5sec.	30 pcs	0/1
	Lead Integrity	Load 2.5N(0.25kgf) 0° ~ 90° ~0°	3times	30 pcs	0/1

LED LAMP ELECTRONIC/OPTICAL CHARACTERISTICS CURVE

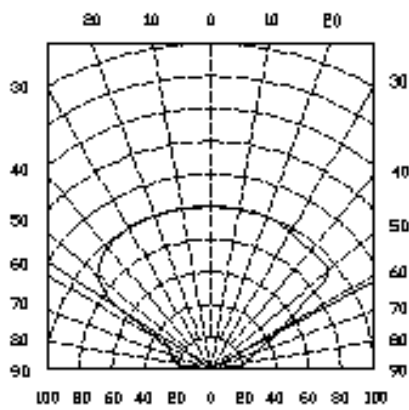
BDL-P01W



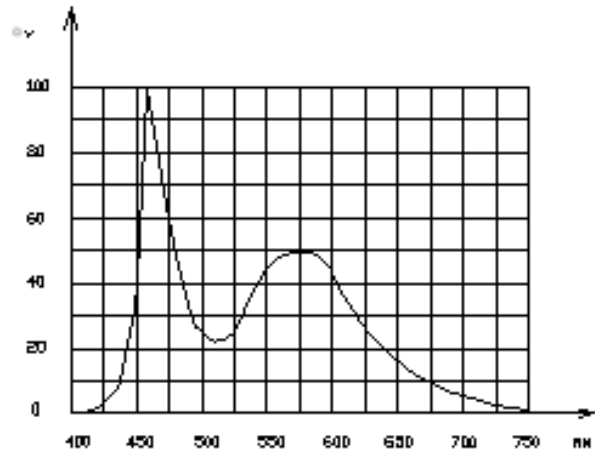
伏安特性曲线



功率光效特性曲线



光强空间分布曲线



光谱曲线